



# ZERO DEGREES OF SEPARATION

## THE ROLE OF THE SOCIAL DETERMINANTS

Economic Stability

Health & Healthcare

Neighborhood & Environment

Social & Community Context

Education

# Navigating the Re-Entry Maze: Transitioning to Freedom

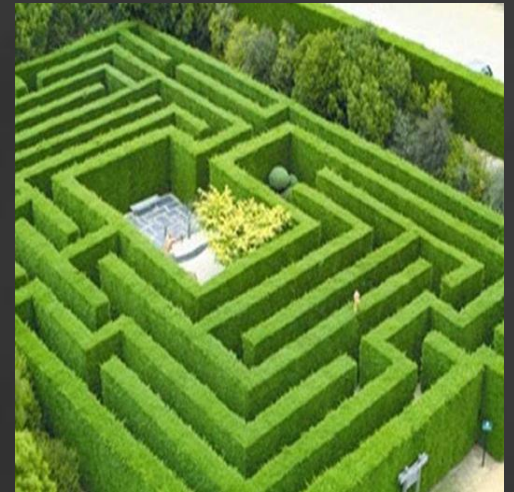
Holistic Transformative Integrated Case Management

---

**JONDHI HARRELL BSHSM**

**MSW CANDIDATE**

THE CENTER FOR RETURNING CITIZENS



# Countries with Highest Recidivism Rates

---

1. Ireland 62%
2. United States 52%
3. Scotland 50%
4. United Kingdom (England & Wales) 46%
5. Japan 43%
6. Australia 39%

# Federal Recidivism Statistics

---

- ▶ Over 8 year follow-up period, almost  $\frac{1}{2}$  of Federal offenders released in 2005 (49.3%) were rearrested for a new crime or rearrested for a violation of supervision conditions.
- ▶ Justice Statistics revealed that 43% of felons on State probation.

# Pennsylvania Recidivism Rates

Table 1: Penna. 2000 - 2010 Rearrest Rates Year of Release

Rearrest Rates 6-Month 1-Year 3-Year

	6-Mo.	1-Yr	3-Yr		6 mo	1-Yr	3-Yr
2000	12.4%	23.0%	47.2%	2005	13.8%	25.1%	51.1%
2001	12.9%	23.8%	47.6%	2006	13.2%	25.1%	50.6%
2002	12.7%	23.3%	48.2%	2007	13.9%	25.9%	50.4%
2003	12.0%	23.0%	48.4%	2008	14.2%	25.9%	50.7%
2004	12.7%	23.6%	49.1%	2009	14.5%	25.4%	N/A
				2010	12.3%	23.7%	N/A

# Starting Over is Not Easy

---

- ▶ Many people who have been incarcerated are dual diagnosed having substance abuse and mental health issues. Often there is a dysfunctional family background and lack of adequate coping mechanism for the problems which will arise.
- ▶ Incarceration causes trauma. PTSD (Post Traumatic Stress Disorder) is common among those returning to society though often untreated.

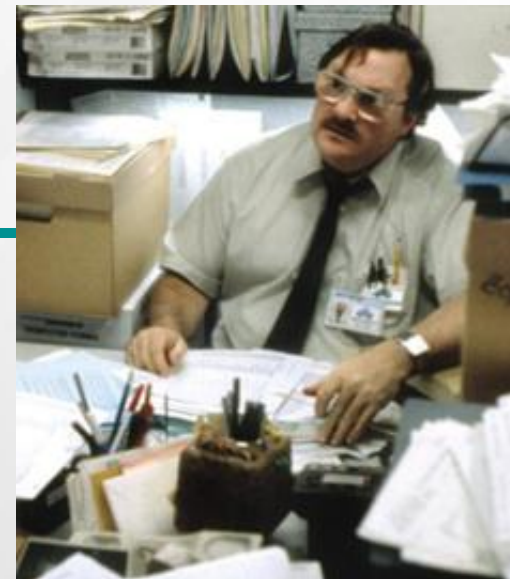
# Returning to the community is not as simple as walking out of the prison gate

---

- ▶ During incarceration, people are told what to do.
- ▶ Freedom means decision-making; evaluation of the past, planning and restructuring the present.
- ▶ Developing a life plan for the future which incorporates short and long term achievable goals.

# Who will help?

- ▶ Social service agencies?
- ▶ Bureaucracy, acronyms, specialization, rules, each agency in a different location.
- ▶ Tight budgets mean the people at the agency desks are short on time.



And they have no idea what it's like behind the walls

**Kaleidoscope Instead** of one entry “pipe” that leads to a coordinated plan for the transition to freedom



# The Challenges are Physical & Philosophical

---

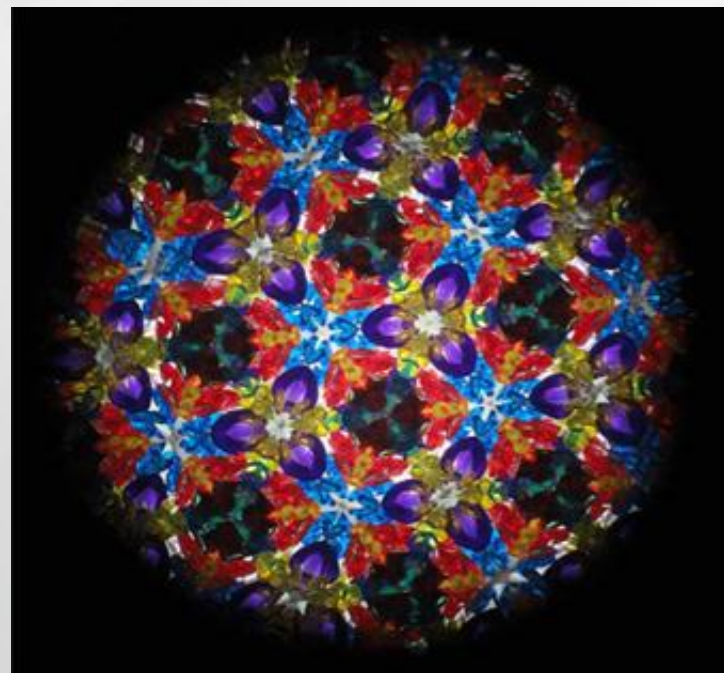
- ▶ How will I reintegrate with my family?
- ▶ How can our new life be sustained?
- ▶ What is the financial & housing situation?
- ▶ How can I find a job?
- ▶ What mechanisms will be used for problem solving and conflict resolution?
- ▶ Where can I find viable peer support systems and mentoring?
- ▶ How can I make sure that I never go back to prison?

# What is Reentry like?

---

Imagine being inside a Kaleidoscope....You walk through the tube toward lights. Find the right path or you'll be sent back into the dark.

But the patterns keep changing.  
How do you get from point to point B?????



- ▶ **Why is it so hard for well meaning people at social services to help?**
- ▶ **Agencies are typically stove-piped.**
- ▶ **No connections from one “pipe” to another.**
- ▶ **What is needed?**



# Ideal Integrated Case Management

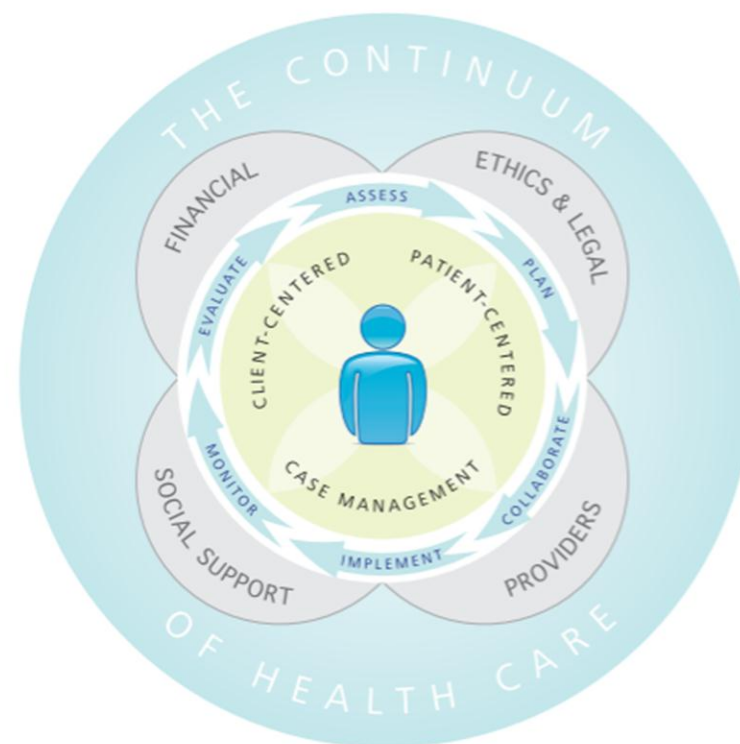
---

- ▶ **Single Point of Entry**
- ▶ **Comprehensive Assessment**
- ▶ **Primary Case Worker who coordinates development & implementation of individual Case Management Plan (CMP)**
- ▶ **Partnership with client in developing & implementing CMP**
- ▶ **Colocation of services - one stop shop**

Source: Providing Comprehensive Integrated Social Services to Vulnerable Children and Families. CLASP

# Case Management:

- ▶ Assessment
- ▶ Planning
- ▶ Facilitation
- ▶ Care coordination
- ▶ Evaluation
- ▶ Advocacy for options & services



Source: Standards of Case Management and Practice, Case Management Society of America

**ZERO DEGREES OF SEPARATION:  
THE ROLE OF THE SOCIAL DETERMINANTS**

# What is the Reality? A Confusing Maze

---

- ▶ No primary case worker for each returning citizen
- ▶ No comprehensive assessment
- ▶ No integrated case management plan
- ▶ No one-stop shop -- multiple entry points for services
- ▶ Stove-piped service agencies that do not coordinate
- ▶ Services don't meet the needs of the individual



# The Center for Returning Citizens

---

- ▶ **With no help from government programs & funding, TCRC is working on these problems.**
- ▶ **TCRC is a grass-roots nonprofit**
  - managed by returning citizens
  - staffed by returning citizens & community volunteers,
  - funded with donations and small grants from the religious community and foundations.



# TCRC Mission

---

- ▶ Assist adjudicated individuals in pre-entry, incarceration & transition re-entry
- ▶ Assist at-risk youth both in and out of the system/derail the school-to-prison pipeline
- ▶ Assist children of incarcerated parents with an afterschool drop in center, enrichment activities & effective collaborations
- ▶ Advocacy in the struggle against mass incarceration



# TCRC Programs

---

## 1. Returning Citizens

- a. Integrated case management in the community
- b. Advocacy
- c. Life Skill & Transitional Workshops

## 2. At-risk youth

- a. Court, community & probation referrals
- b. nonviolence & conflict resolution programs in schools

## 3. Children of Incarcerated Parents

- a. After school drop-in center mentoring & counseling
- b. Enrichment field trips and other activities

# Returning Citizens Case Management

---

1. Intake and Assessment
2. Planning
3. Individual and Group Counseling & Peer Support
  - a. Benefits
  - b. Family Reintegration: spouses, children, other
  - c. School Reintegration
4. Housing Assistance
5. Employment Assistance
6. Physical & Mental Referrals
7. Legal assistance

# Returning Citizens Case Management

---

- ▶ Information on federal, state and city programs (assistance with filing applications) including
  - SNAP
  - TANF
  - Medical Primary Care \* Mental Health \* Marketplace Coverage (Affordable Care Act)
  - Housing
  - Vocational training - sheltered workshop
  - GED

# Counseling & Peer Support

## Returning Citizens Case Management

---

### ▶ Family Reintegration

- Is it possible to return to spouse?
- If not, how can one stay connected with the children?
- What child support is required?
- Is help needed for elderly parents?
- How can one connect to siblings and other relatives?



# Counseling & Peer Support

## Returning Citizens Case Management

---

### ▶ Social Reintegration

- Adjusting to societal norms of thought & behavior
- Dating
- Creating other relationships outside of the family
  - Social groups
  - Churches
  - Other groups



# Housing

## Returning Citizens Case Management

---

- ▶ Halfway Houses
- ▶ Transitional Housing
- ▶ Family Housing
- ▶ Independent Living
- ▶ Living with Significant Others

# Employment Assistance

## Returning Citizens Case Management

---

### JOB SEARCH

- Resume building
- Interviewing skills
- Online applications
- Computer literacy & skill-building
- Federal Bonding Vouchers

### ON THE JOB

- Employment attire
- Transportation
- Workplace etiquette & norms
- Facing stigma

# Referrals & Collaboration with Legal Services

---

- Pre-entry
- Mitigation/ Sentencing
- Criminal
- Appeals
- Probation & Parole
- Child Support
- Mediation Services
- Family
- Tenant-Landlord
- Employment
- Community
- Civil Rights
- Accident
- Insurance Claims
- Fundamental Fairness Initiative



# Advocating on Behalf of Returning Citizens

---

- ▶ **Employment for a Living Wage**
- ▶ **Union Apprenticeships**
- ▶ **Organizing in the Incarcerated community**
- ▶ **Organizing in the Returning Citizen community**
- ▶ **Organizing the Faith Based Communities**
- ▶ **Developing legislation on a city/state & federal level**

# Life Skill Workshops

---

- ▶ Life Skills Behavior Change
- ▶ Critical Thinking / Ethics
- ▶ Building Strong Relationships/Parenting
- ▶ Family Social & Community Responsibility
- ▶ Time Management
- ▶ Conflict Resolution/Anger Management & De-escalation of Aggression
- ▶ Legal Issues facing Returning Citizens

# Life Skill Workshops

---

- ▶ High Impact Leadership Training
- ▶ Criminal Relapse Prevention (Roundtable w/ community returning citizens)
- ▶ The Responsibilities of Citizenship
- ▶ Re- Entry Employment/developing marketable skills
- ▶ Entrepreneurship
- ▶ Measuring and Maintaining a Successful Transition

# Financial Support for TCRC

---

## Current Funding Sources

- Church donations
- Corporate & individual donors

<http://tcrcphilly.org/sponsorship/>

## Potential Funding Sources

- City Council Support for initiatives & Funding
- State funding from Harrisburg
- Fee for Service Contracts Pa. Department of Corrections
- Dept of Labor & Dept of Justice Demonstration Grants
- Law Firms, Corporate Donors, Foundations

# Conclusion

---

- ▶ **TCRC seeks to address the problems that are inherent in the system of mass incarceration on many levels.**
- ▶ **Direct services are extremely important yet the advocacy is vital for moving the process forward.**
- ▶ **Mass Incarceration is at the core of the problems experienced by those who are transitioning. Unless the causes are addressed successful transition is not possible.**

# References

---

- ▶ **Pennsylvania Department of Corrections Recidivism Report, 2013**  
<http://www.nationalcia.org/wp-content/uploads/2013-PA-DOC-Recidivism-Report.pdf>
- ▶ **Recidivism Among Federal Offenders, A Comprehensive Overview, 2016**  
[http://www.ussc.gov/sites/default/files/pdf/research-and-publications/research-publications/2016/recidivism\\_overview.pdf](http://www.ussc.gov/sites/default/files/pdf/research-and-publications/research-publications/2016/recidivism_overview.pdf)
- ▶ **Incarceration and Recidivism, Lessons from Abroad,**  
[http://www.salve.edu/sites/default/files/filesfield/documents/Incarceration and Recidivism.pdf](http://www.salve.edu/sites/default/files/filesfield/documents/Incarceration_and_Recidivism.pdf)

# References

---

- ▶ Standards of Case Management and Practice, Case Management Society of America, <http://www.cmsa.org/portals/0/pdf/memberonly/standardsofpractice.pdf>
- ▶ Providing Comprehensive, Integrated Social Services to Vulnerable Children and Families: Are There Legal Barriers at the Federal Level to Moving Forward?, Part of the Cross Systems Integration Project of the National Governor's Association, the Hudson Institute and Center for Law and Social Policy <http://www.clasp.org/resources-and-publications/files/0170.pdf> February 2004

**Q&A**



# Contact Information

**J. Jondhi Harrell**

Just Leadership Fellow 2016

Executive Director

The Center for Returning Citizens

[jharrell@tcrcphilly.org](mailto:jharrell@tcrcphilly.org)

# Upcoming Events

---

**Housing IS Healthcare: What Can Be Done  
to Address the Most Important Social  
Determinant of Health?**

**December 14, 2016; 12-1PM**

**Visit our website to register:**

**<http://ctacny.org/social-determinants-health>**

**Contact us at  
CTAC.info@nyu.edu**

**Economic Stability**

**Neighborhood & Environment**

**Health & Healthcare**

**Social & Community Context**

**Education**

THE  
SOCIAL  
DETERMINANTS  
OF HEALTH

